



M-0404SE

HDMI 4X4 Matrix



OVERVIEW

The VitBest M-0404SE HDMI matrix with 12V power adapter for multiple HDMI sources to multiple display devices by different routing. With high reliability, low power consumption, high bandwidth (support HDMI 1.4) features, M-0404SE can achieve up to 4x4 size.

User can control the matrix operation by panel buttons, PC serial port.

TECHNICAL SPECIFICATIONS

ELECTRICAL PARAMETERS

Interface	HDMI-A
HDMI version	HDMI1.4
Bandwidth	300MHz
Resolution	Up to 4Kx2K@30Hz
Clock Jitter	<0.15 Tbit (1080p@60)
RiseTime	<0.3Tbit (20%--80%)
Transmission Delay	5ns
Amplitude	T.M.D.S +/- 0.4Vpp
Differential Impedance	100±15ohm

RS232 CONTROL

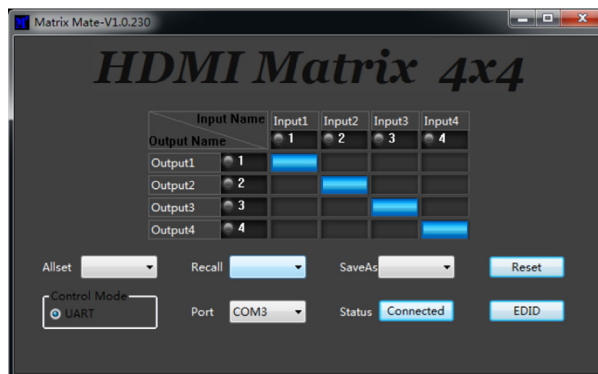
Baud Rate and Protocol	Baud rate: 9600, data bit: 8, stop bit: 1, No parity checking
------------------------	---

POWER

Max Consumption	10W
Adapter	12V/3A

MATRIX MECHANICAL DIMENSIONS

Size(mm)	300(L)X130(W)X32(H)
Weight	1.4Kg



About VitBest

VitBest is a professional digital audio video products manufacturer dedicates in manufacturing high quality, reliable and stable products. For audio-visual system integrators, a trustworthy distribution and control electronics components means much more than their sizes.

©2024 VitBest All rights reserved. Due to continued innovation, information and technical specifications are subject to change without prior notice. Visit our website or contact us for the latest information.

www.vitbest.com
info@vitbest.com